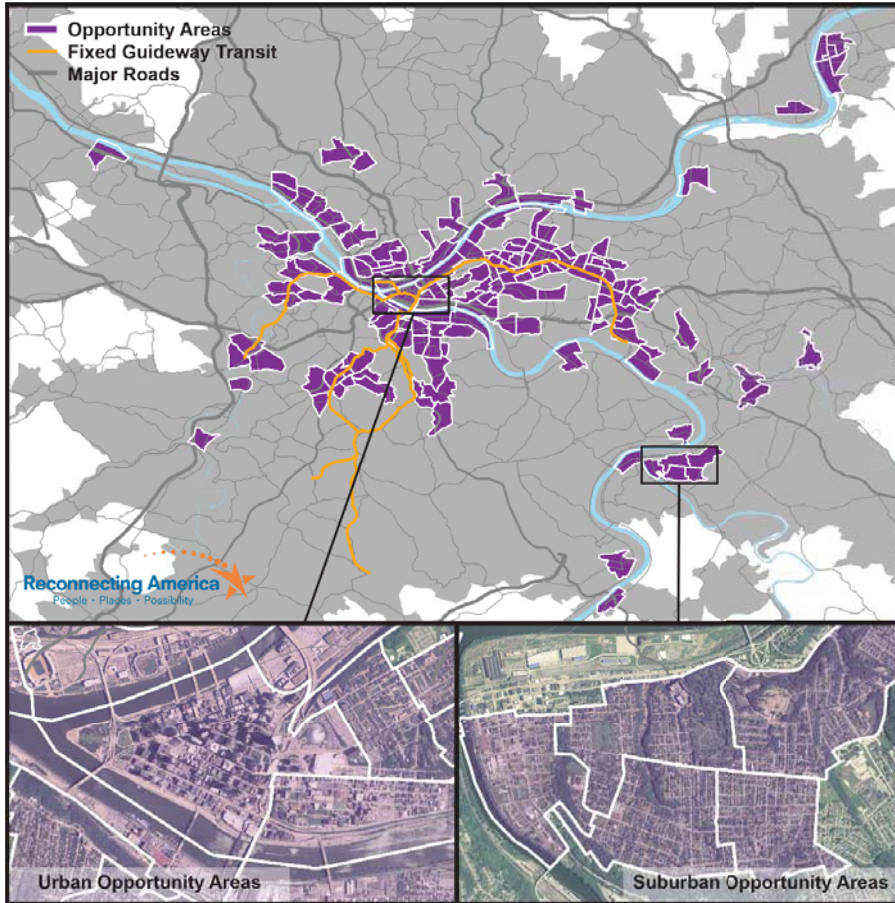


ARE WE THERE YET?

# Pittsburgh

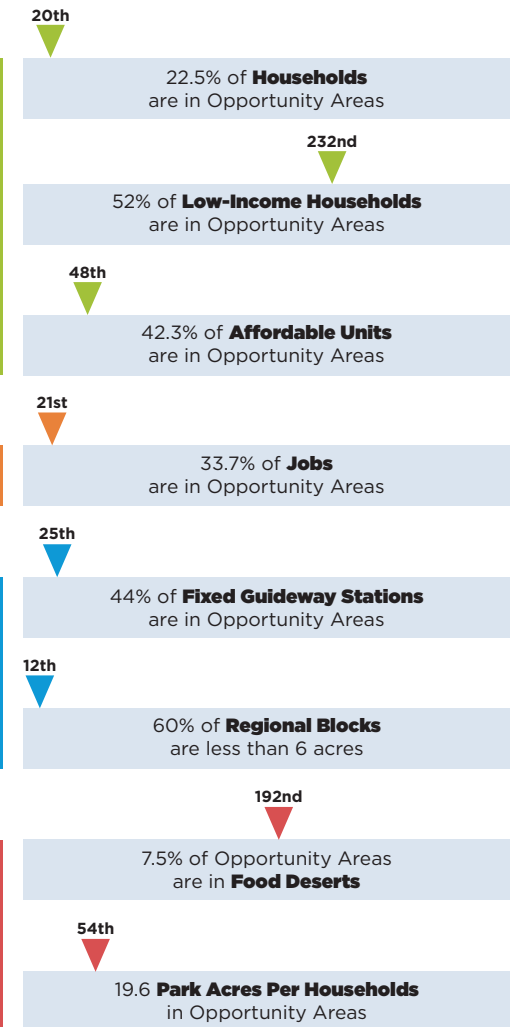


Population: **2,356,285**  
 Fixed Guideway Stations: **94**  
 Opportunity Areas: **199**

## OPPORTUNITY AREA SCORECARD

How **Pittsburgh** measures up against other metropolitan regions

DOING WELL NEEDS FIXING



Our communities need basic elements to support economic opportunity and health for all people. Reconnecting America identified the neighborhoods with these elements – smaller blocks and moderate density housing and/or jobs – to define opportunity areas. Using opportunity areas and other data points, Reconnecting America created metrics and determined composite grades for every metropolitan statistical area (MSA) in the country.